

GN 275 | Pivoting connecting clamps

Aluminium



- 1
- 2
- 3
- 4
- 5
- 6
- 7
- 8
- 9
- 10
- 11
- 12
- 13
- 14
- 15
- 16
- 17
- 18

MATERIAL

Aluminium, matte finish.
AISI 304 stainless steel screw and nut.

STANDARD EXECUTIONS

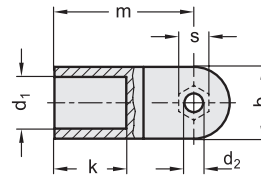
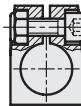
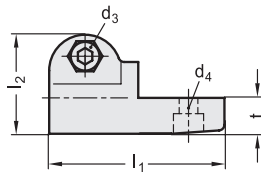
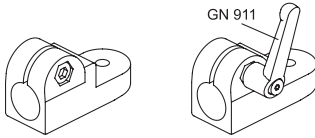
Surface finish index:
- **BL**: natural colour.
- **SW**: epoxy resin coating resistant to UV rays, RAL 9005 black colour.

FEATURES AND APPLICATIONS

The assembly hole of GN 275 connecting clamps allows an excellent match with tubes GN 990 (see page 1368).

GN 275 connecting clamps can be assembled with connecting clamps GN 271 (see page 1341), GN 273 (see page 1343) or GN 277 (see page 1347).

The clamping screw d_3 may be replaced by clamping kit GN 911 (see page 1372).



Conversion Table 1 mm = 0.039 inch	
b	
mm	inch
25	0.98



Code BL	Code SW	Description	b	d1	d2	d3	d4	k	l1	l2	m	t	s	d3 Clamping kit	Δ
GN.59011	GN.59016	GN 275-B12-2-*	25	12	6.5	M6	M6	25	61	34.5	48.5	12.5	10	GN 911-M6-22	74
GN.59031	GN.59036	GN 275-B14-2-*	25	14	6.5	M6	M6	25	61	34.5	48.5	12.5	10	GN 911-M6-22	70
GN.59051	GN.59056	GN 275-B16-2-*	25	16	6.5	M6	M6	25	61	34.5	48.5	12.5	10	GN 911-M6-22	60
GN.59071	GN.59076	GN 275-B18-2-*	25	18	6.5	M6	M6	25	61	34.5	48.5	12.5	10	GN 911-M6-22	64

Connecting clamps

2

* Complete the description of the standard item needed by adding the finish of the connector clamps: BL (blank) or SW (black).